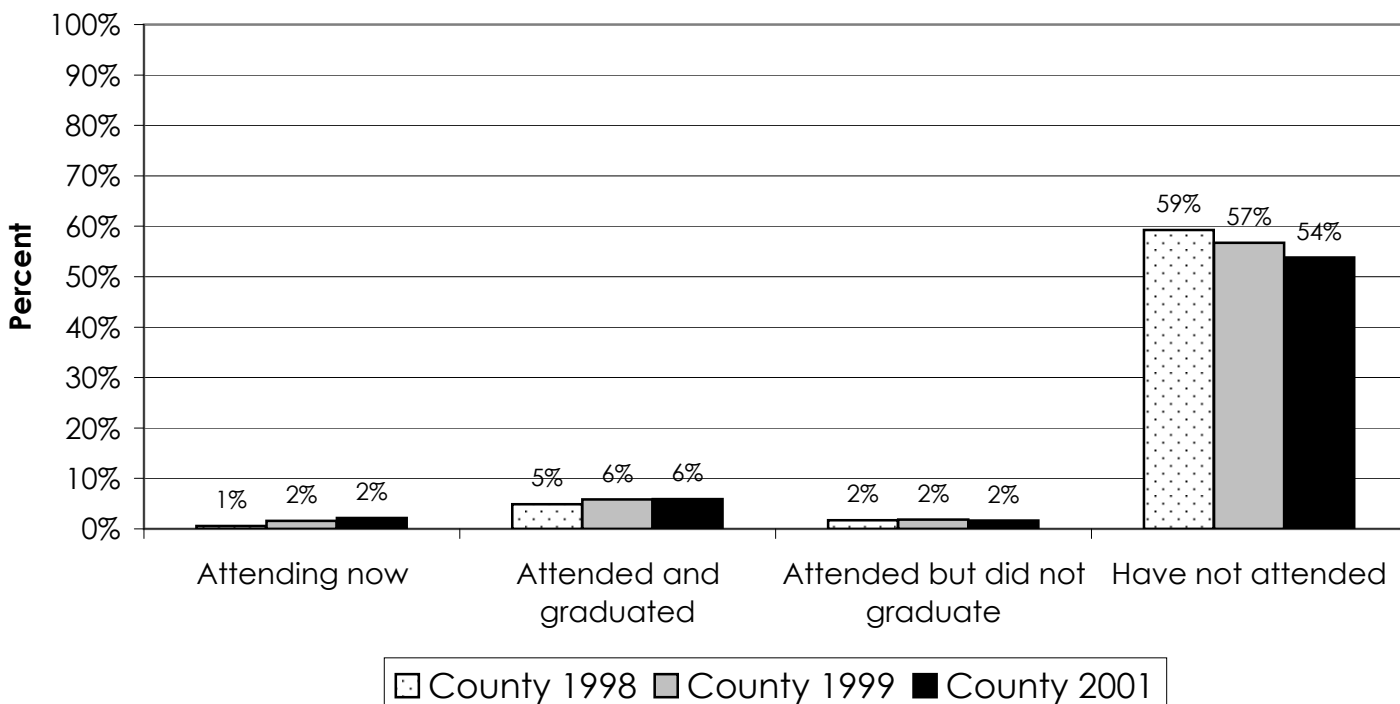
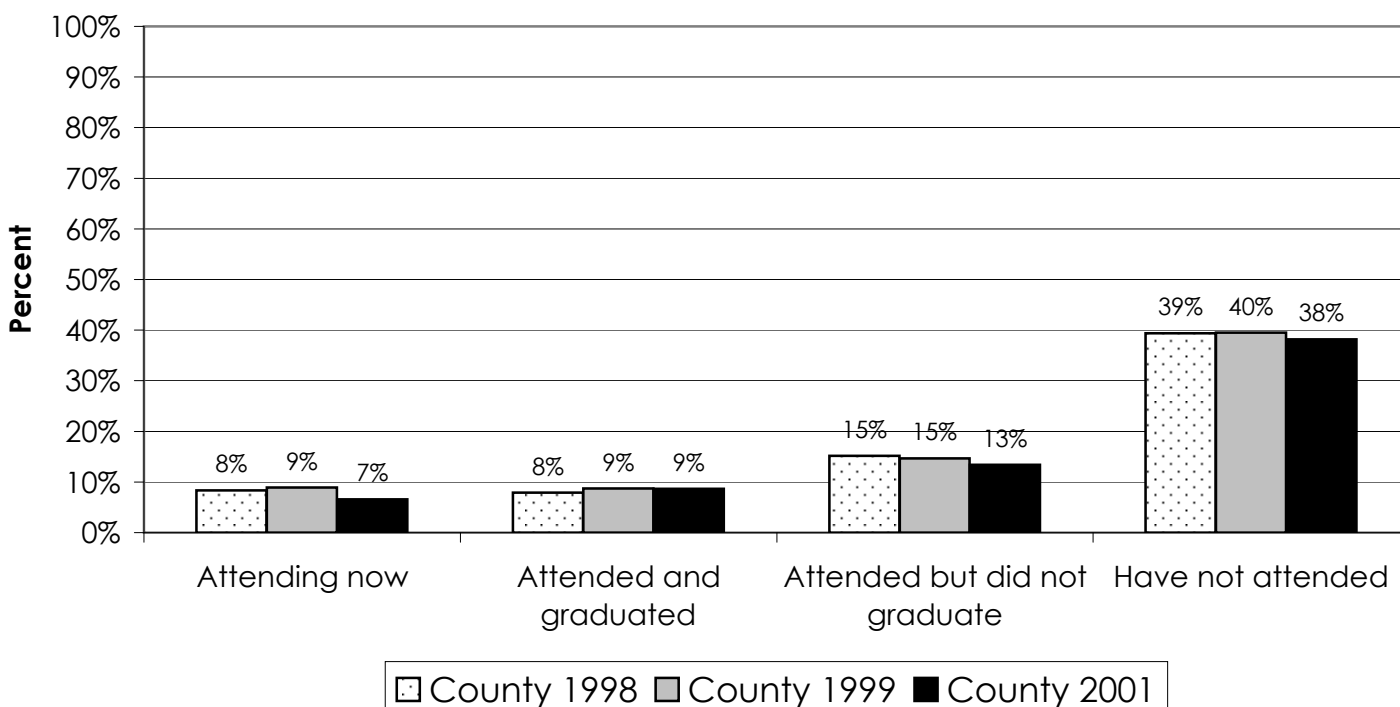


Class of 2001 5-year Graduate Follow-up Survey

Have You Attended a Vocational/Technical Program? (Q1a)

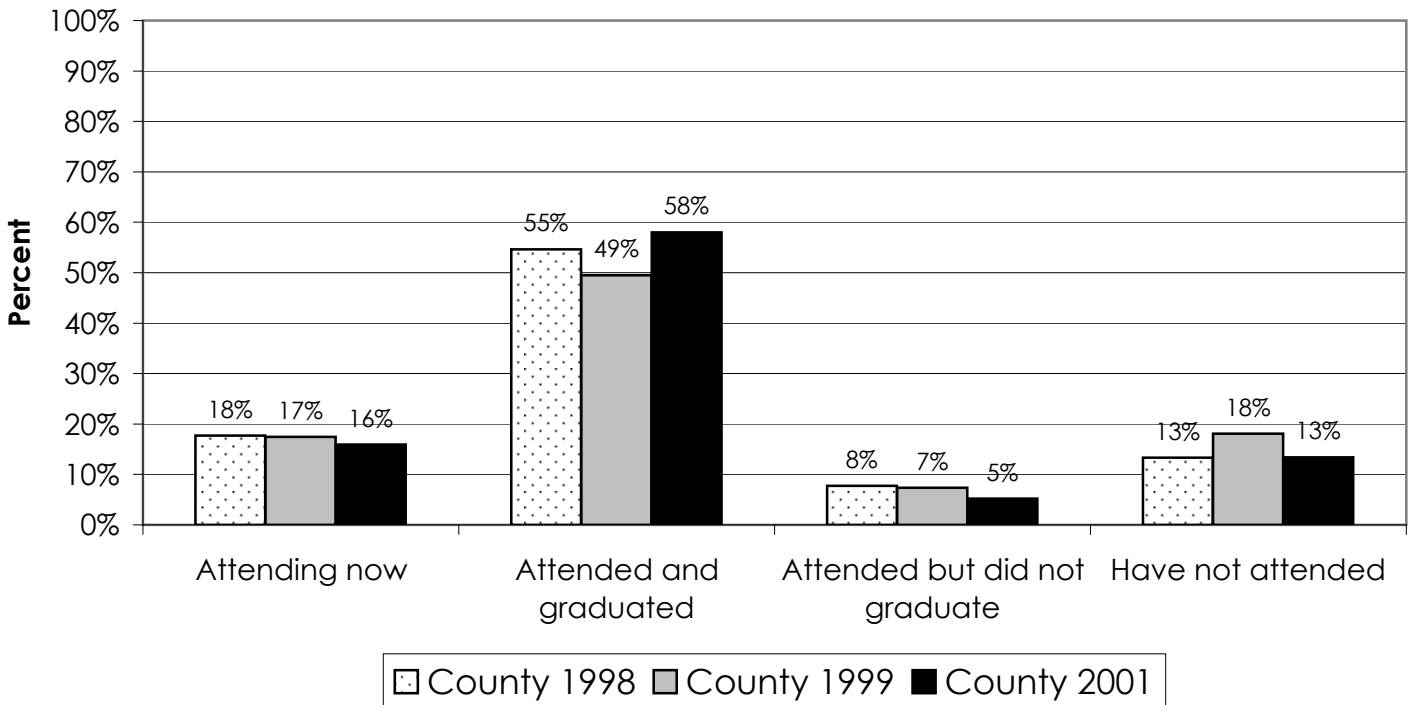


Have You Attended a 2-Year/Community College? (Q1b)

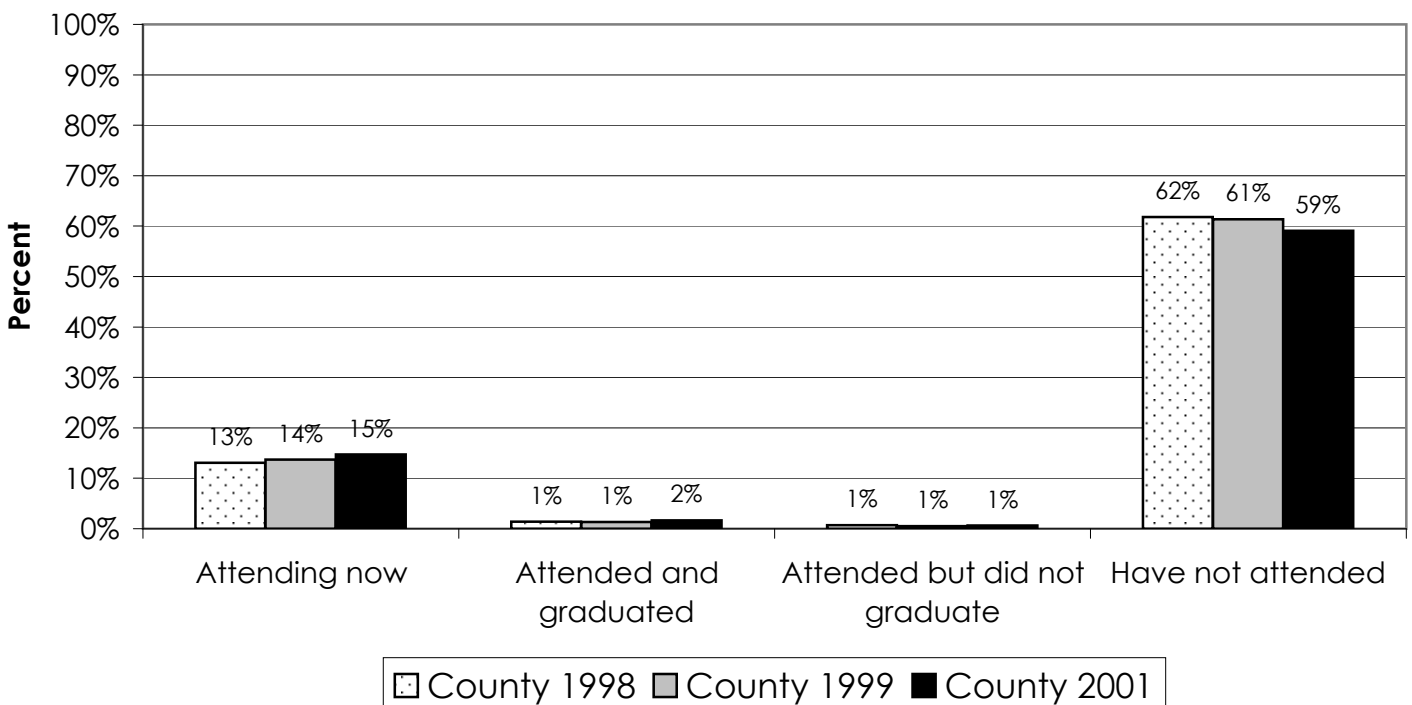


Class of 2001 5-year Graduate Follow-up Survey

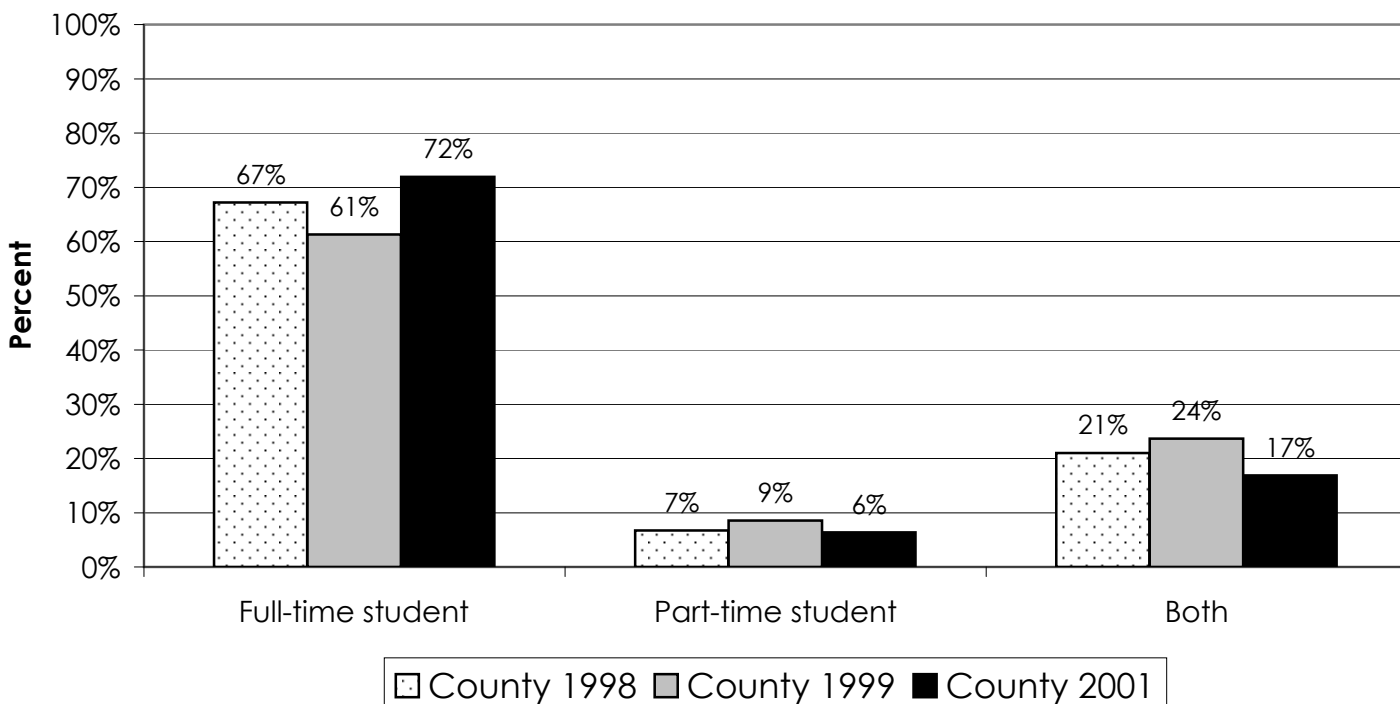
Have You Attended a 4-Year College or University? (Q1c)



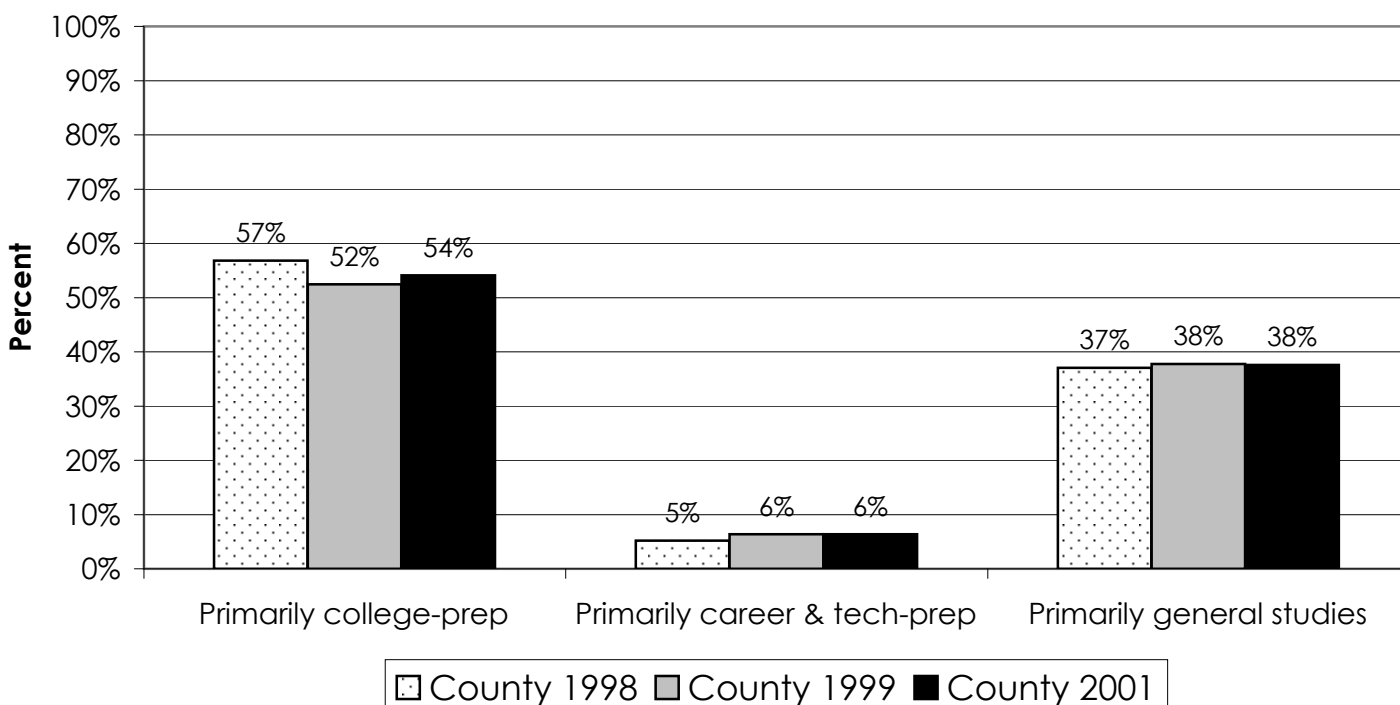
Have You Attended a Graduate/Law/Medical School? (Q1d)



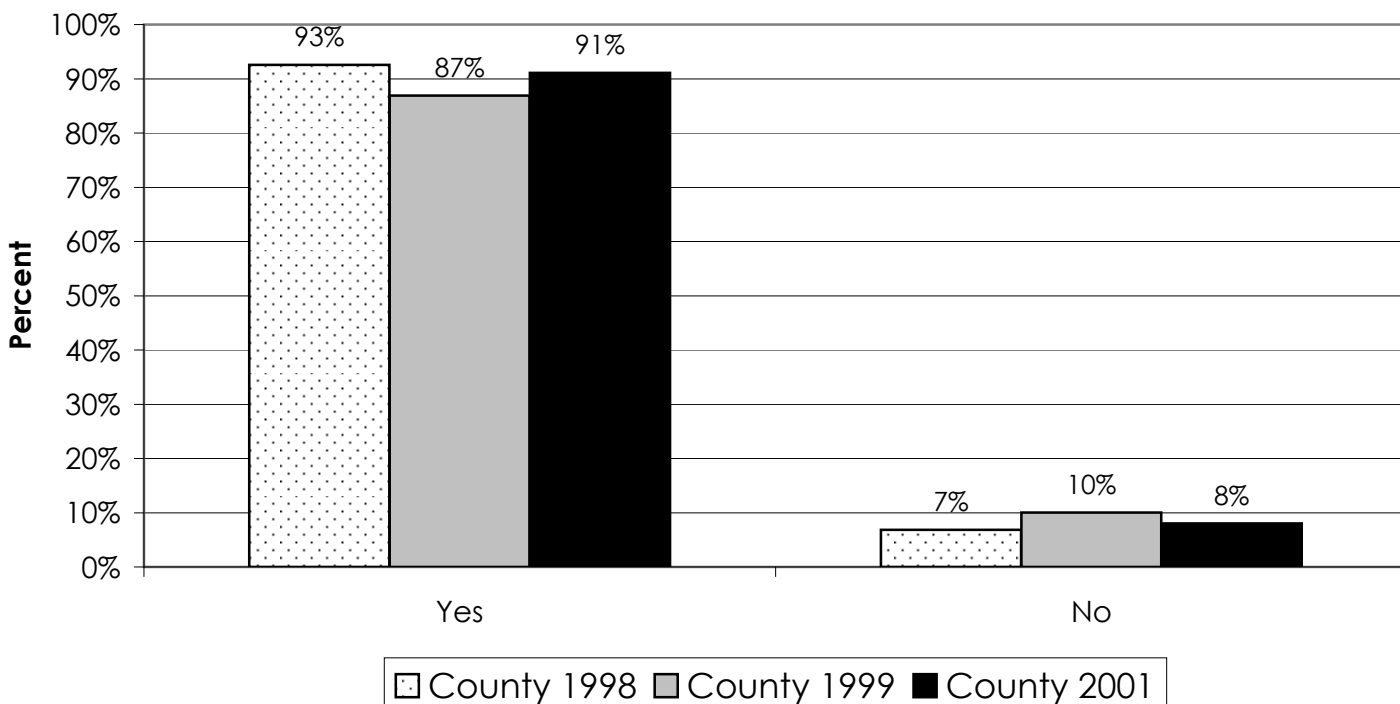
### During Your Post-Secondary Education, Did You Attend... (Q2)



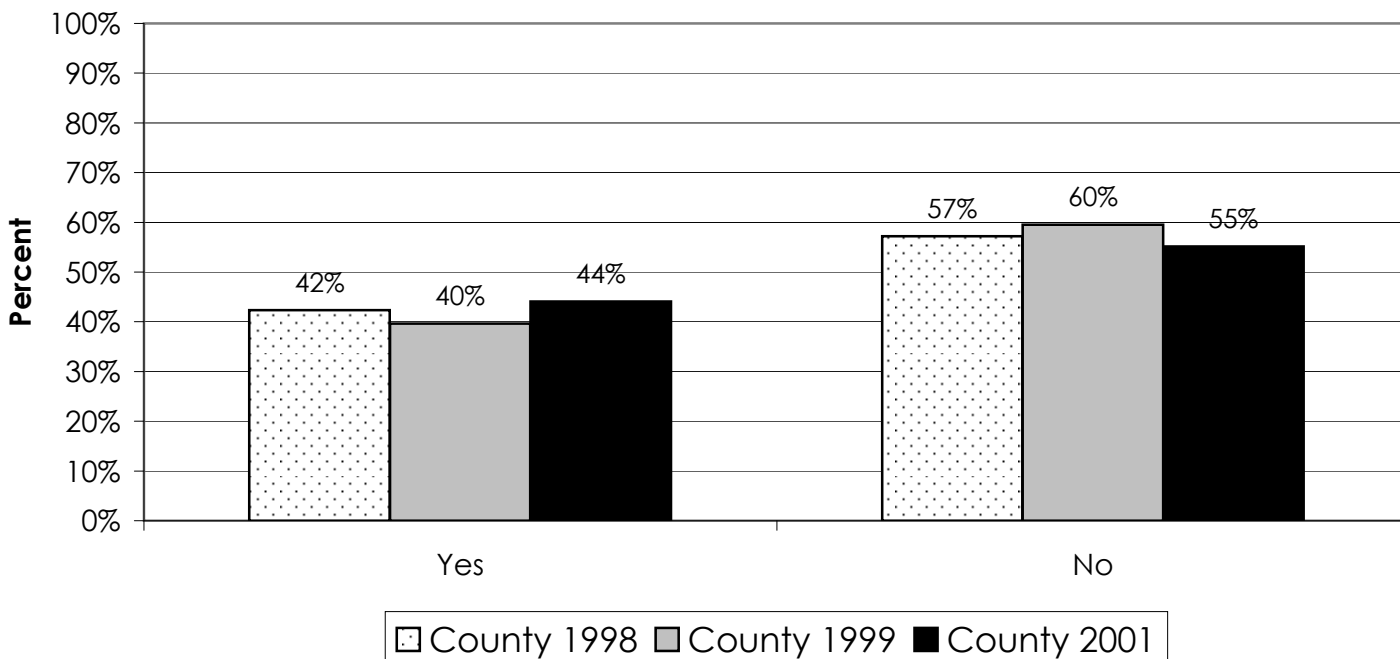
### Which Program Did You Follow in High School? (Q3)



### Did You Take Algebra I or Beyond in High School? (Q4)

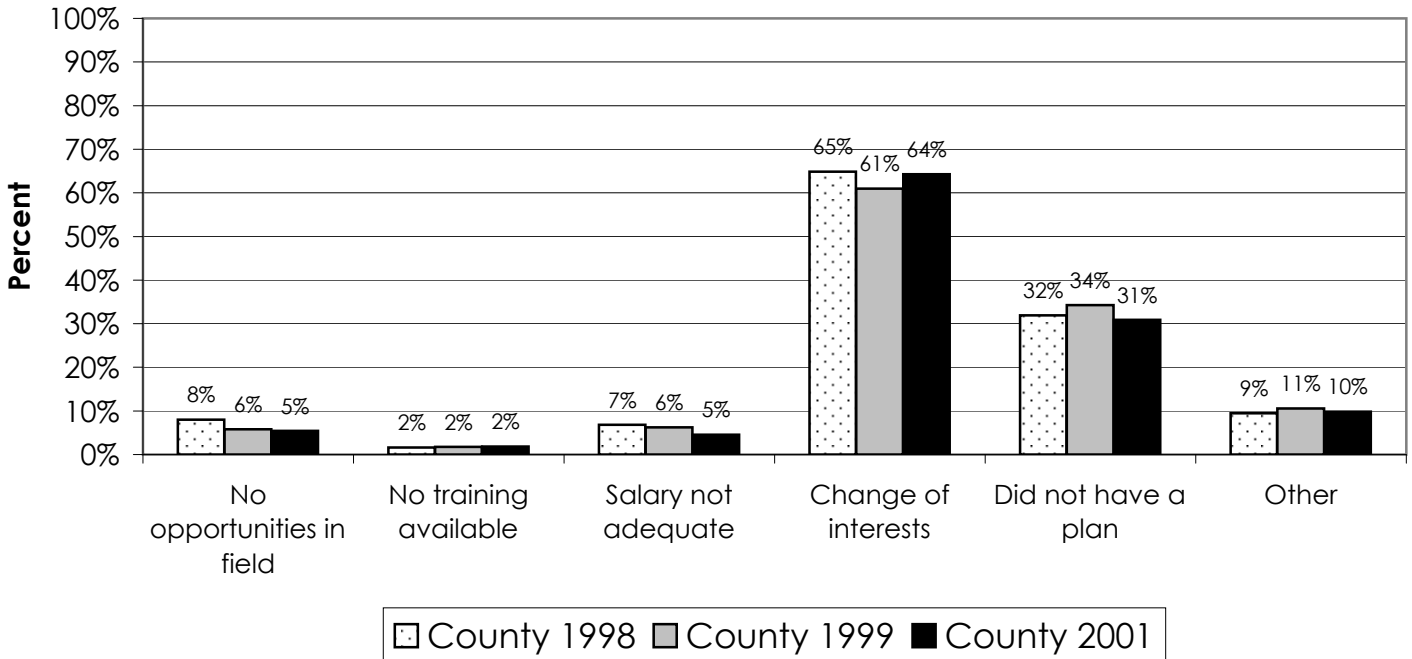


### Are You Presently Pursuing the Career Path You Planned While in High School? (Q5)

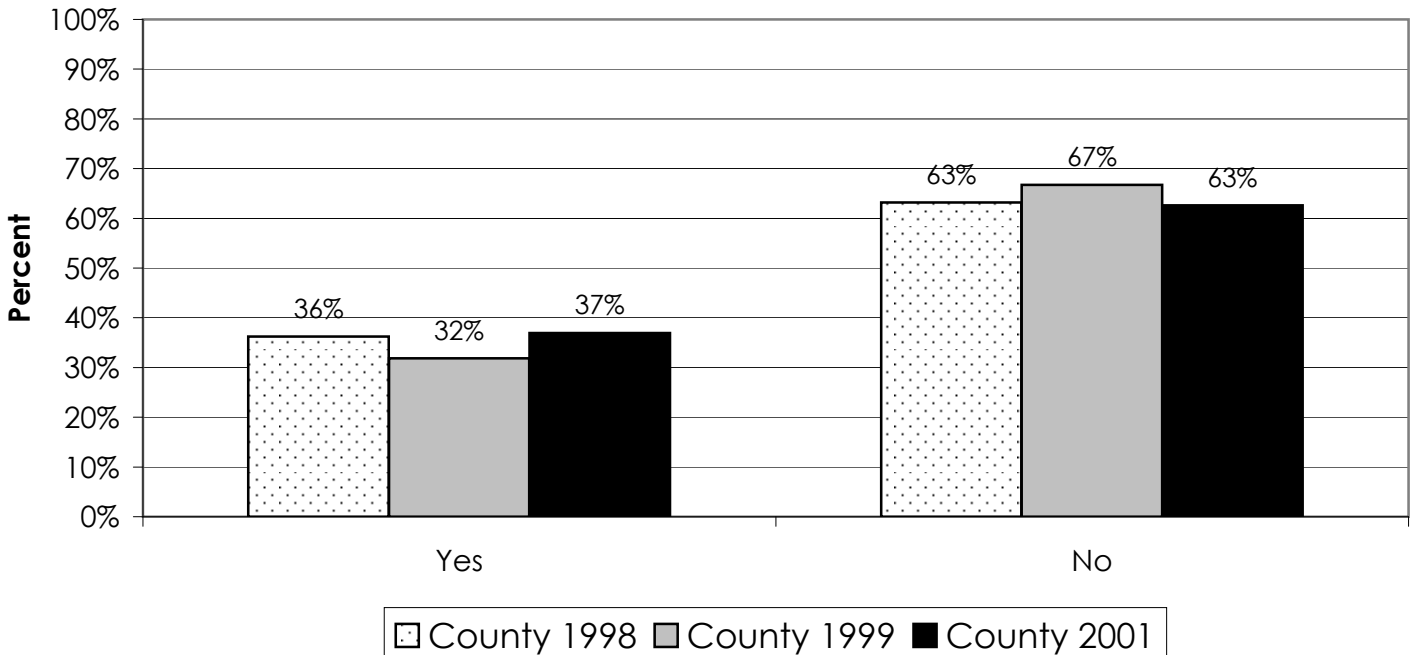


Class of 2001 5-year Graduate Follow-up Survey

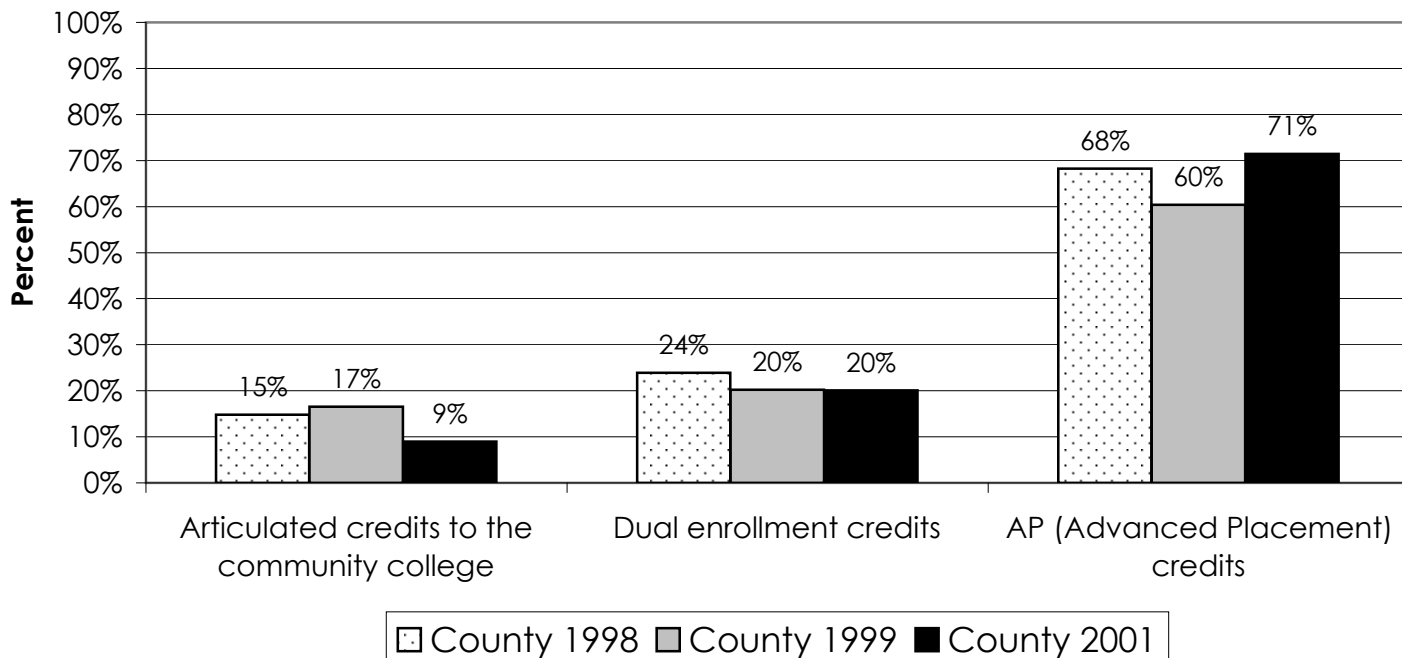
**Why Not? (Q6)**  
(Could Select All That Applied)



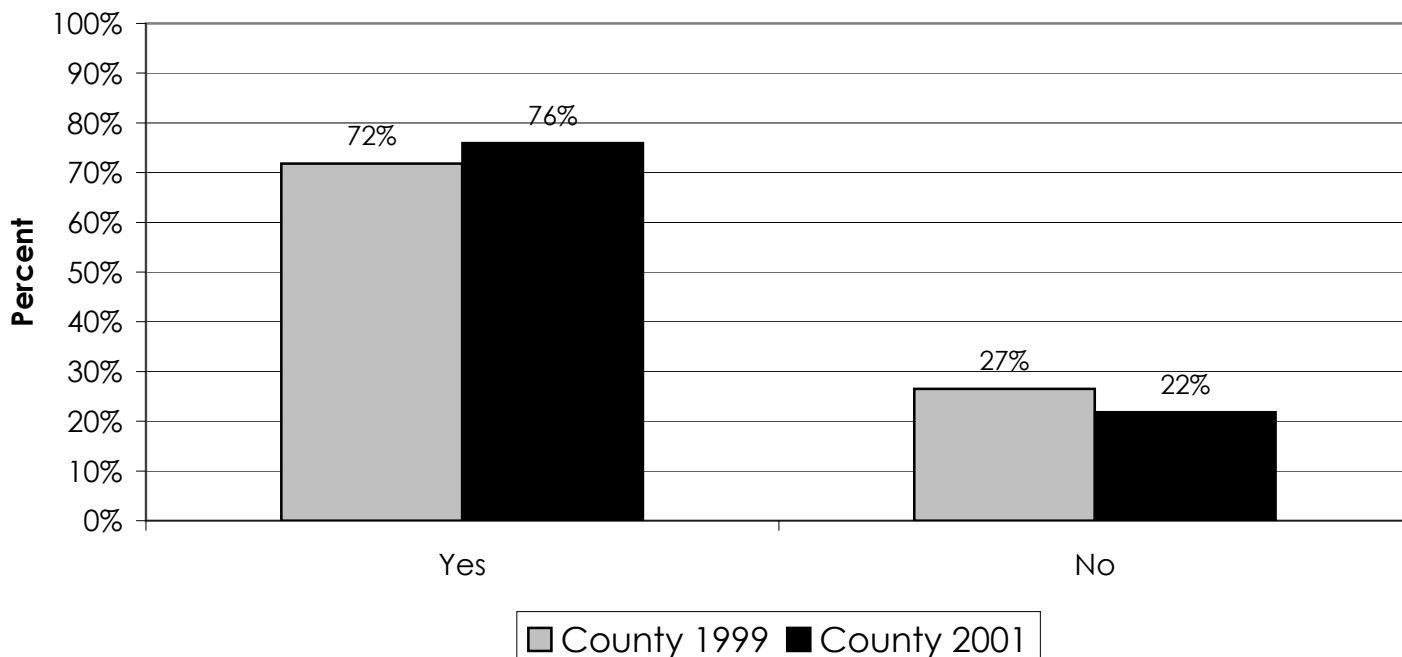
**Did You Have Any College Credits When You Left High School? (Q7)**



### What Types of Credits Were They? (Q8) (Could Select All That Applied)

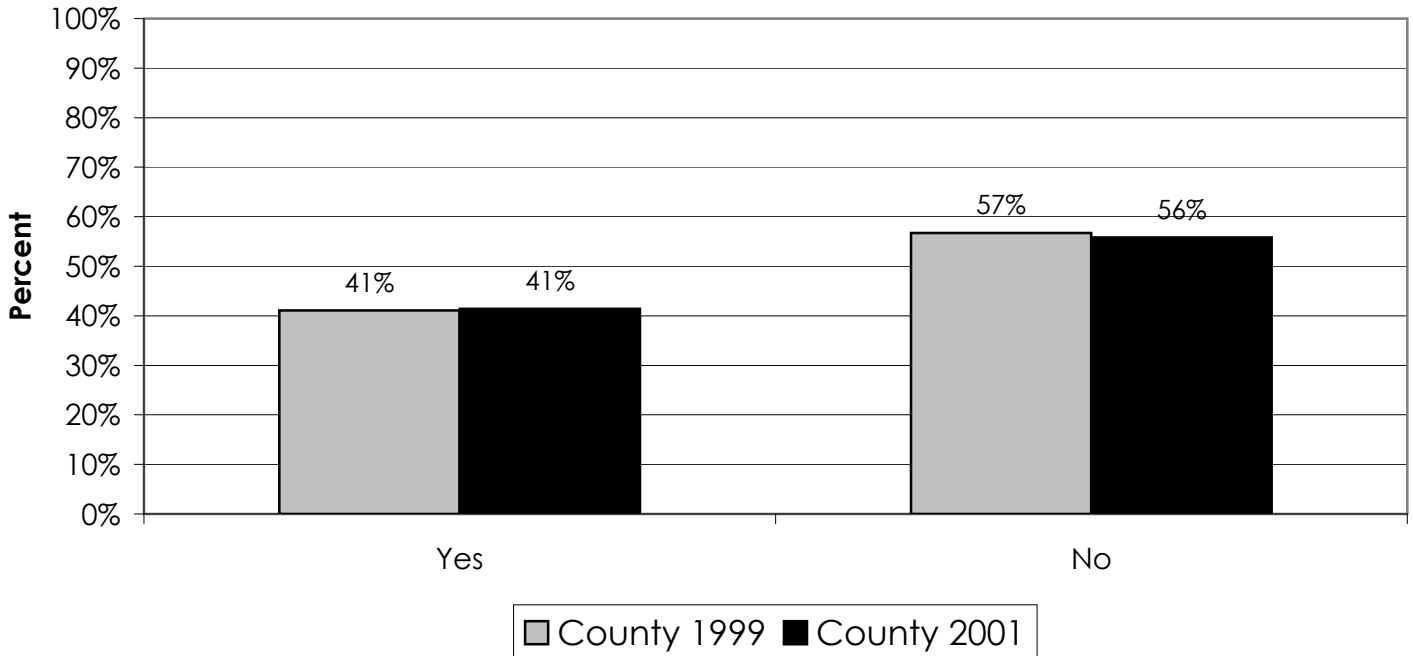


### Have You Found That Your High School Experience Prepared You Well for Your Future? (Q9)

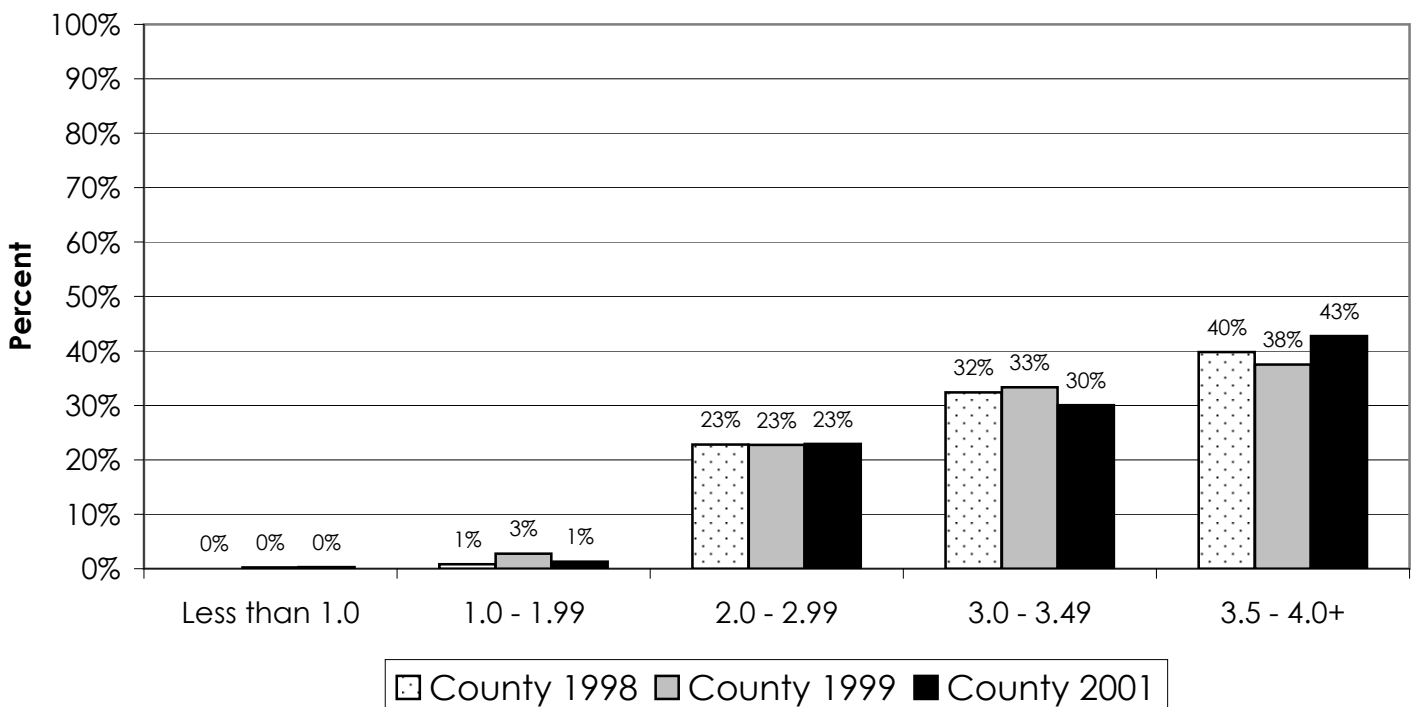


Class of 2001 5-year Graduate Follow-up Survey

Do You Wish That You Had Taken Your High School Coursework More Seriously? (Q10)

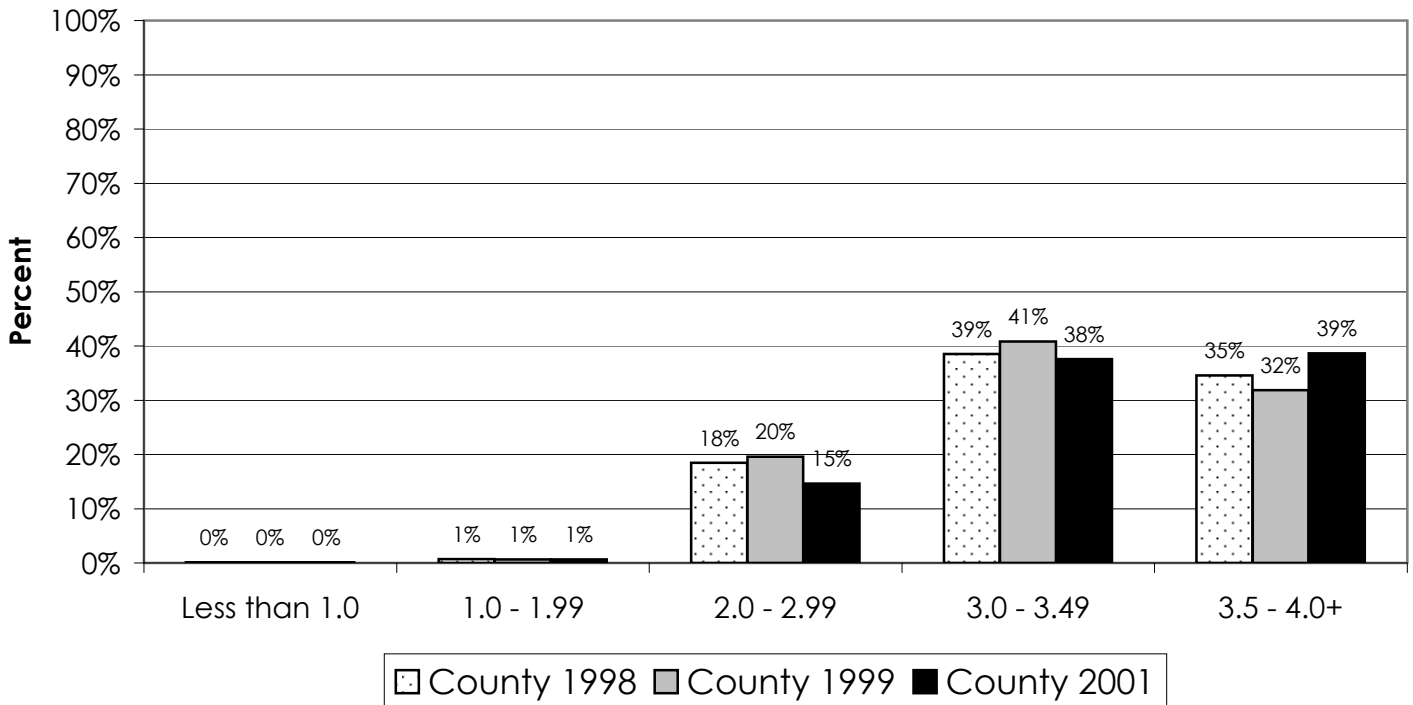


What Was Your GPA in High School? (Q11a)

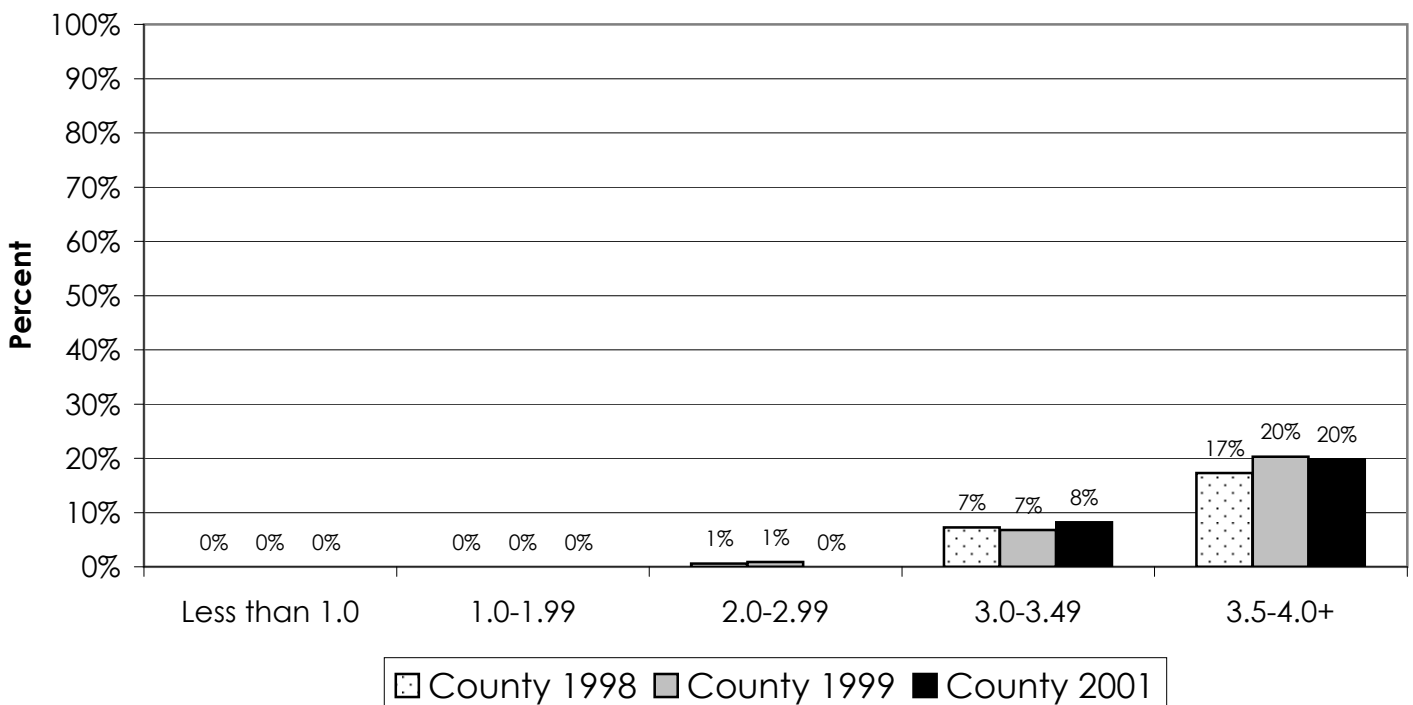


Class of 2001 5-year Graduate Follow-up Survey

What Was/Is Your GPA in College? (Q11b)



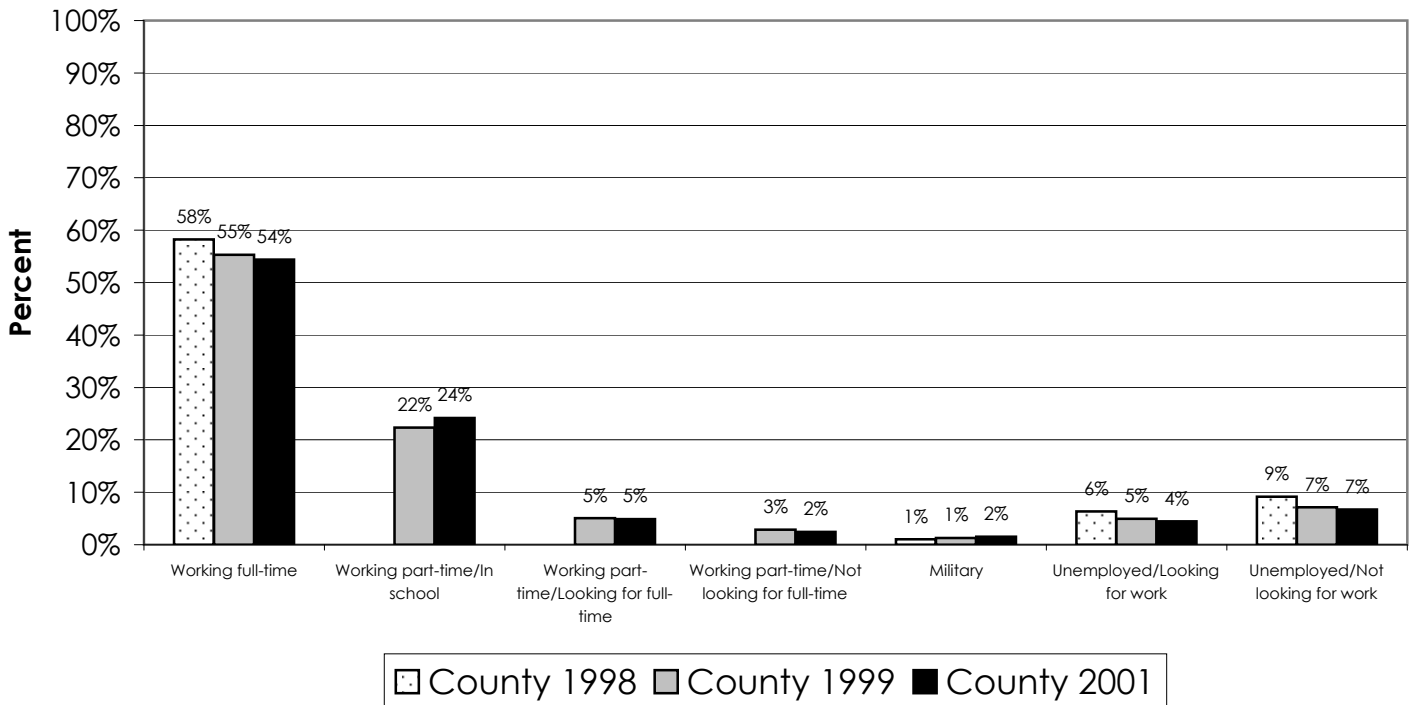
What Was/Is Your GPA in Graduate School? (Q11c)



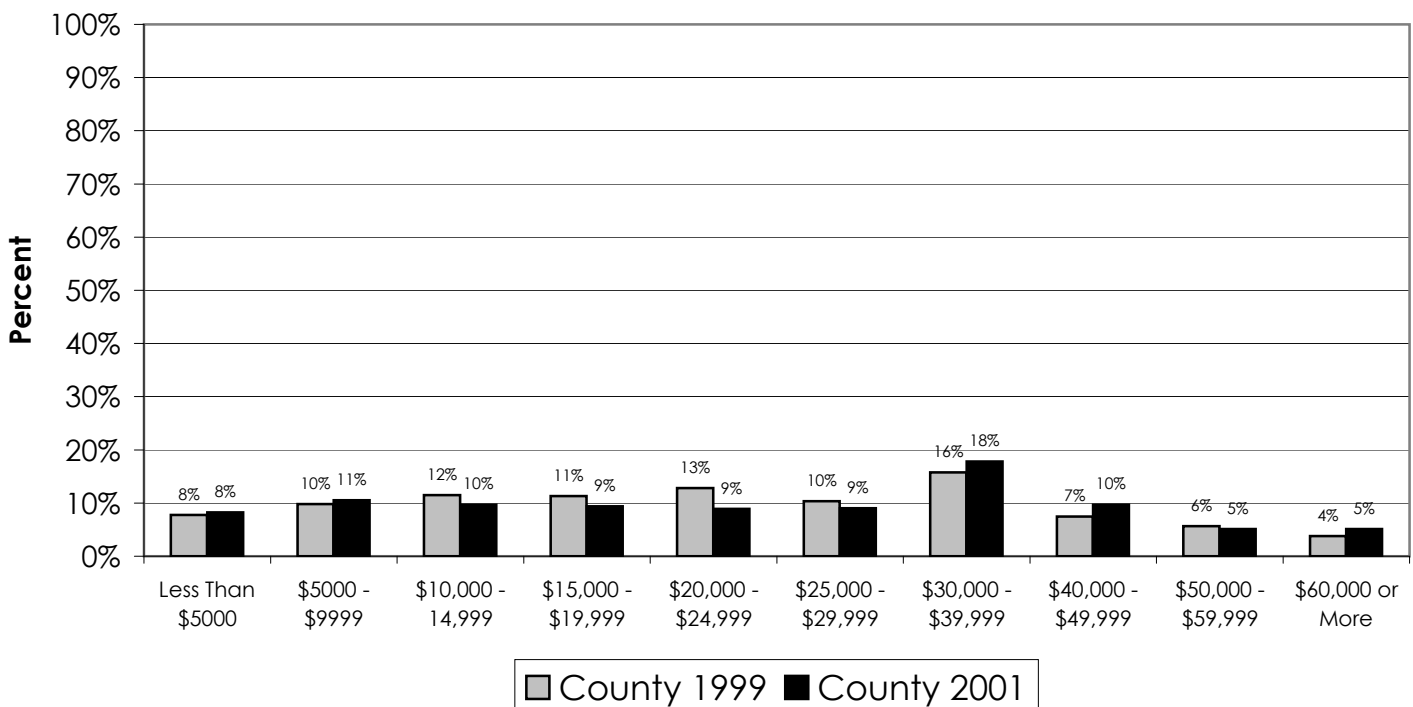
County Results (1998 n=864, 1999 n=1146, 2001 n=985)

Class of 2001 5-year Graduate Follow-up Survey

What Is Your Present Work Status? (Q12)

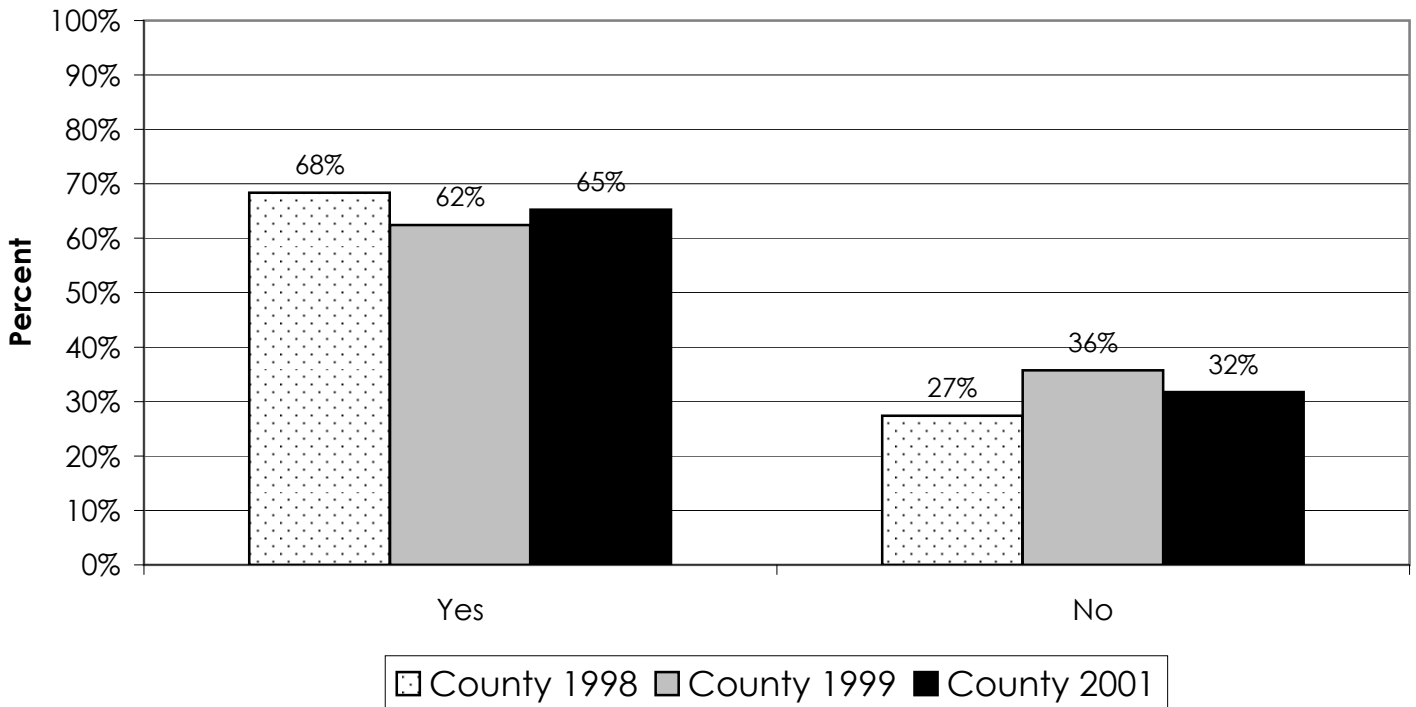


What is Your Wage or Salary Per Year? (Q13)

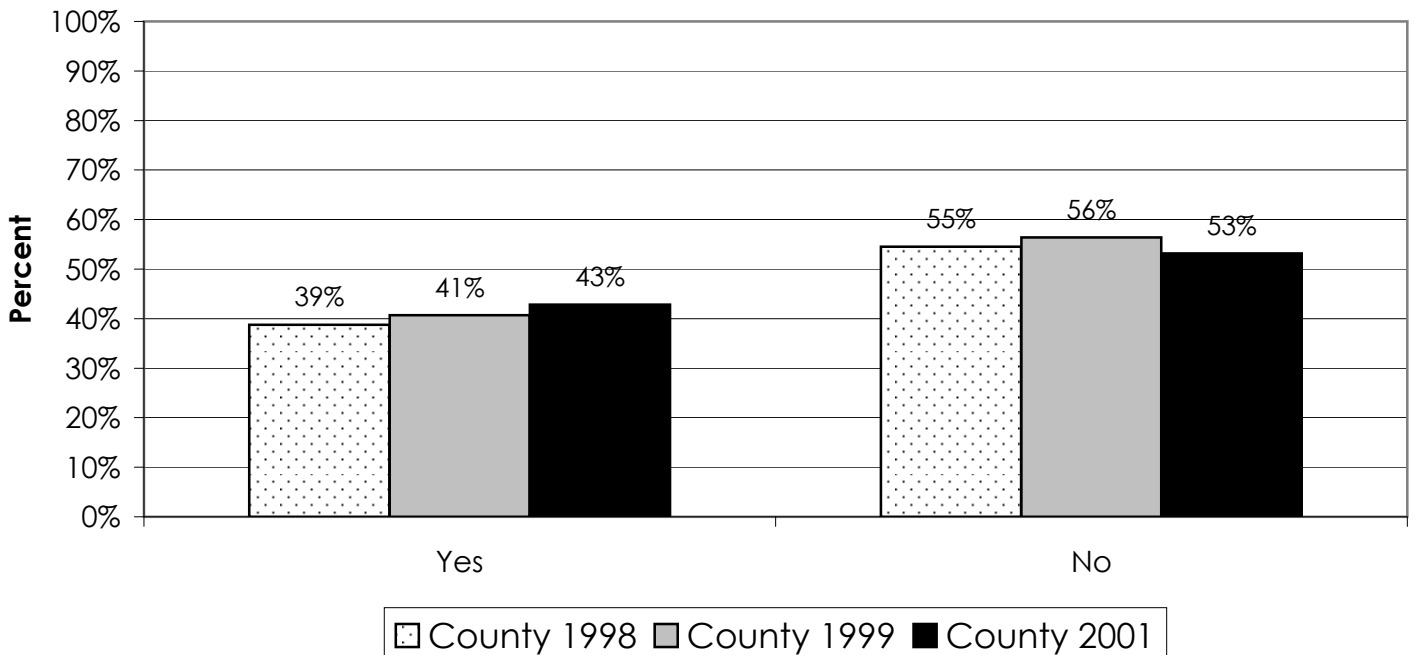


County Results (1998 n=864, 1999 n=1146, 2001 n=985)

### Does Your Job Offer Benefits? (Q14)

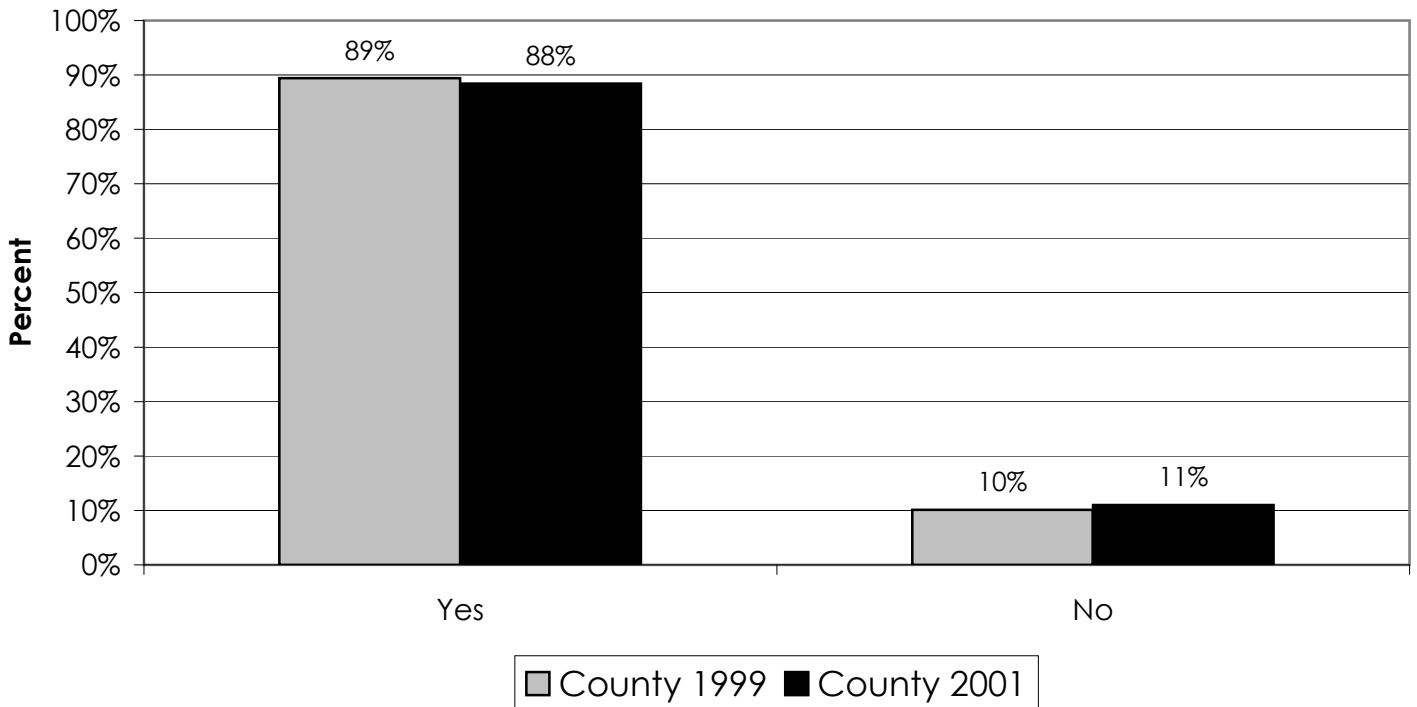


### Do You Plan on Making a Career Out of Your Present Job? (Q15)

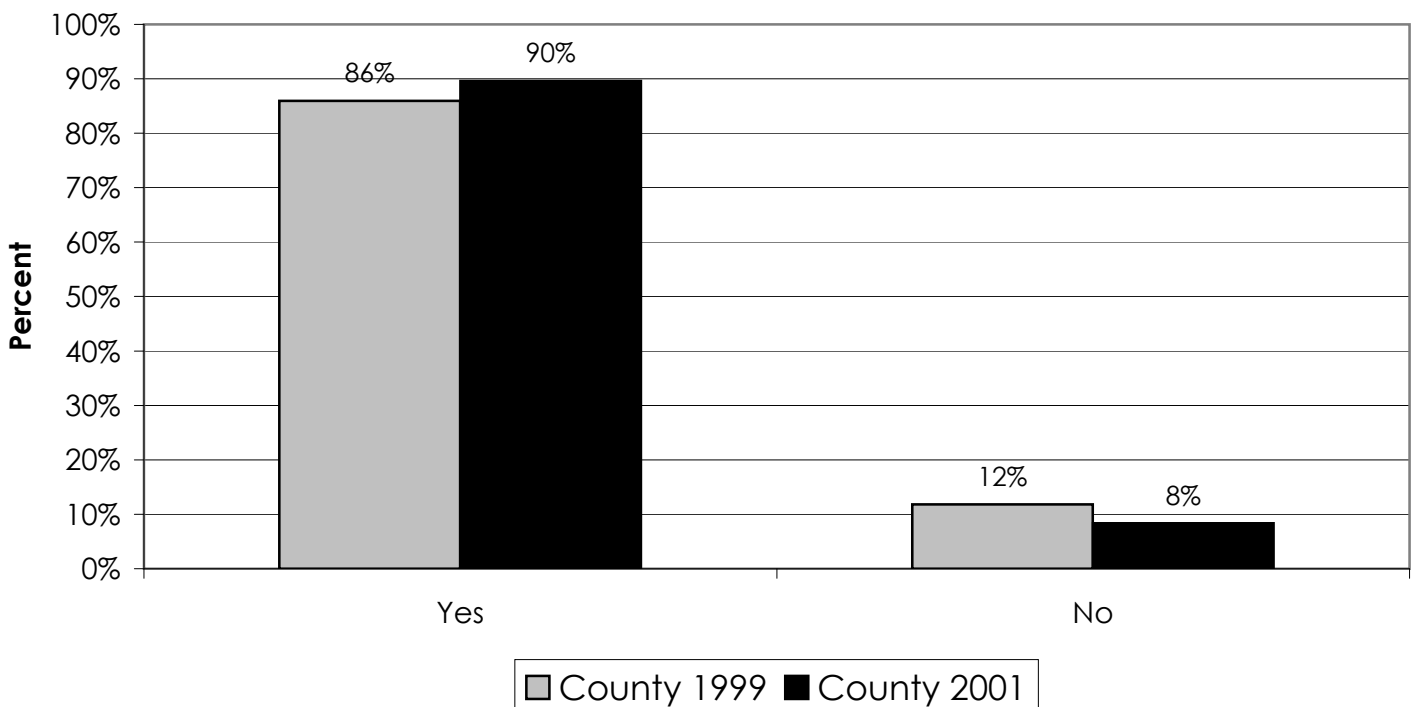


Class of 2001 5-year Graduate Follow-up Survey

Have You Registered to Vote? (Q16)

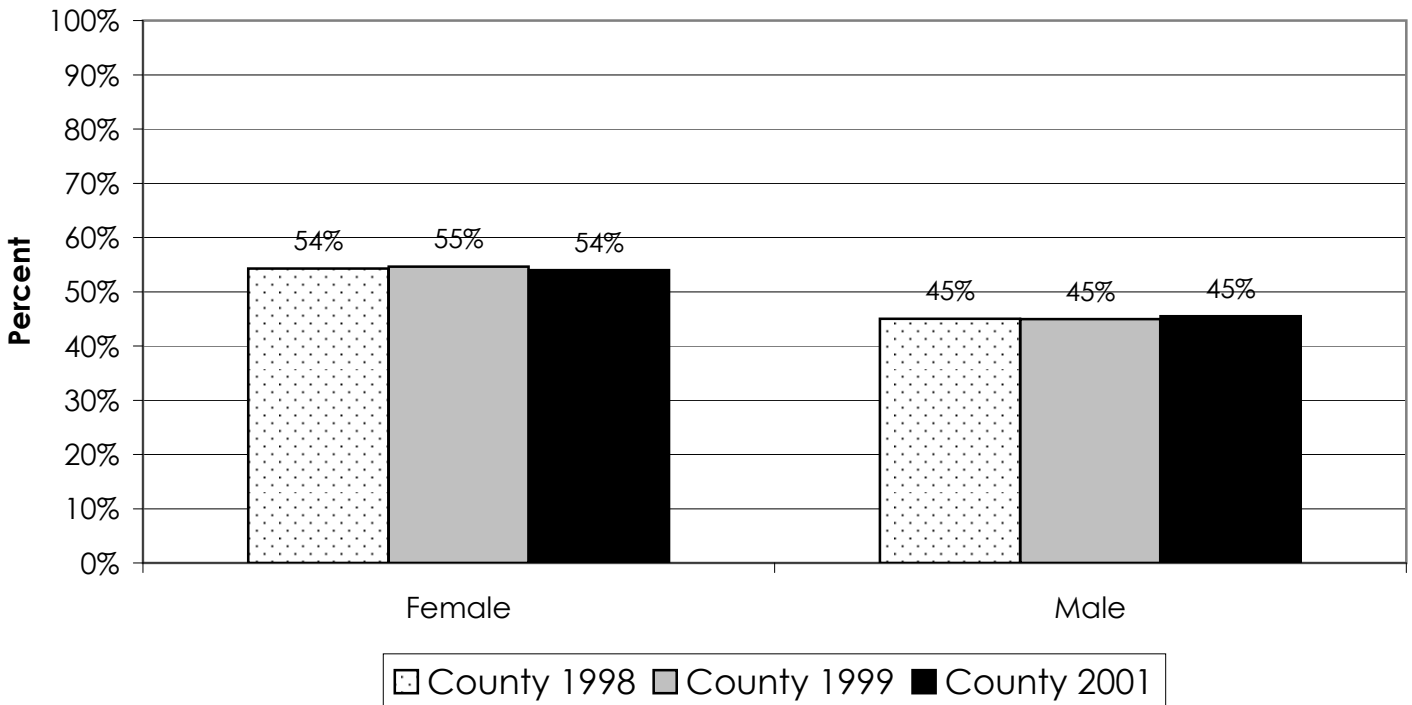


Have You Voted in an Election Yet? (Q17)

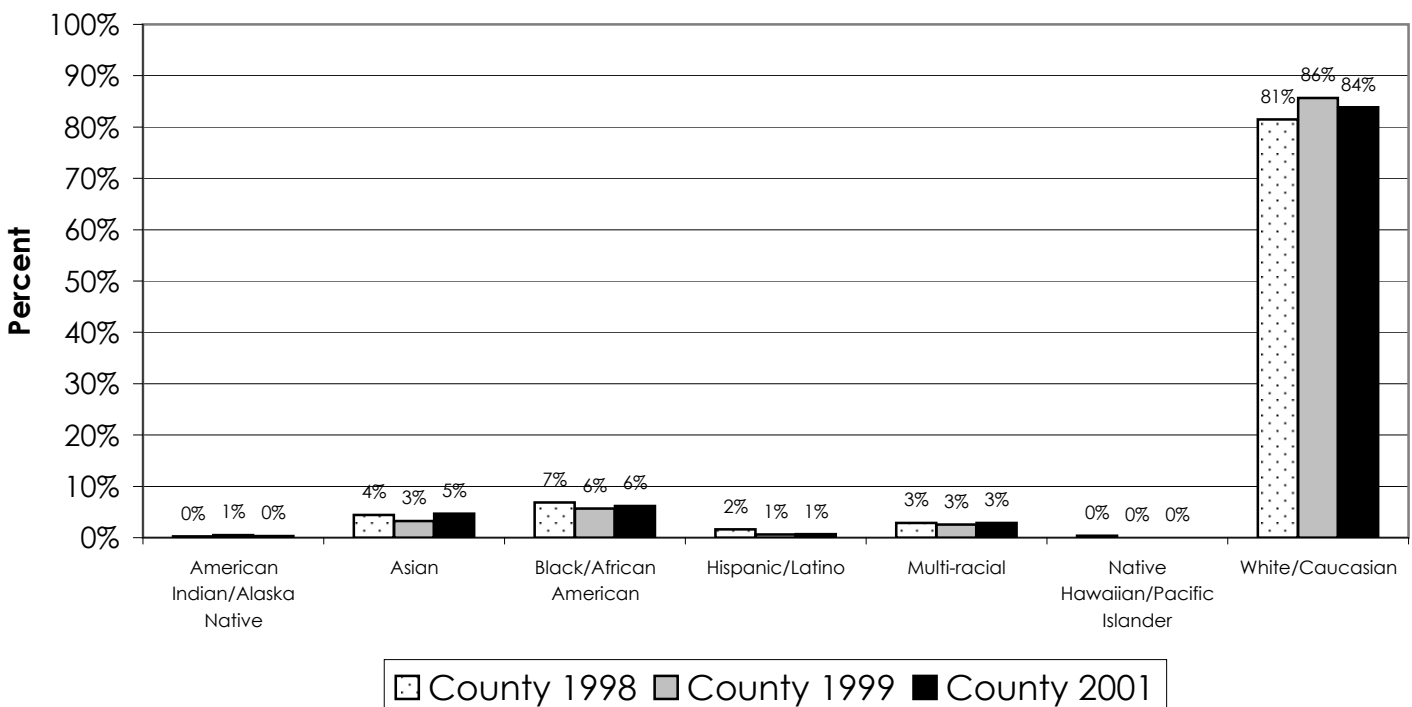


Class of 2001 5-year Graduate Follow-up Survey

Gender (Q18)



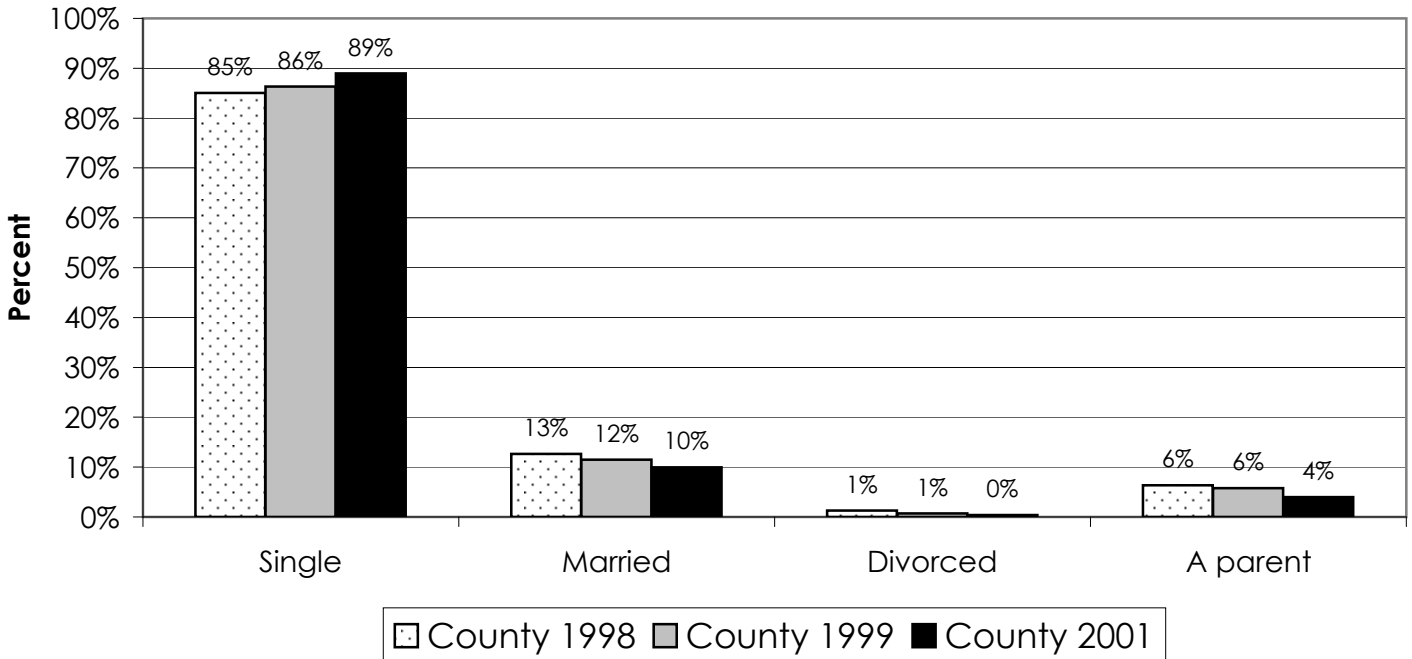
Race/Ethnicity (Q19)



County Results (1998 n=864, 1999 n=1146, 2001 n=985)

Class of 2001 5-year Graduate Follow-up Survey

**Present Marital Status (Q20)**  
(Could Select All That Applied)



**Present Residential Status (Q21)**  
(Could Select All That Applied)

